

The North Norfolk coast is loved for its big skies, its white sand, windswept beaches and being a bird watcher's paradise, but unspoilt countryside is not all it has to offer. East Anglia was once the richest county in England and is peppered with historic buildings including churches and stately homes.

In the 18th century Norwich was the second wealthiest city in England after London due to its wool trade and textile industry that thrived from medieval times until the 19th century. The city's thirty one medieval churches and its 11th century cathedral stand testament to its wealthy past.

The Norwich textile industry was best known for developing a type of worsted cloth and for its expertise in dyeing and weaving. When the industry began to wane in the 19th century, local weavers turned to making shawls inspired by the fashionable but expensive imports from Kashmir, India. The English word 'shawl' comes from the Persian 'shal', meaning a 'type of woven fabric'. Norwich Shawls were made in two different styles: as wide scarves with plain centres and decorated borders, or big squares with plain centres, woven borders and fringes on all sides. Formal rows of pine-shaped motifs, a design originally from Persia, were typical and on the early shawls these patterns were often embroidered on rather than woven into the cloth. The Norwich shawls, also known as Fillover shawls, were woven on a draw loom, which allowed more elaborate patterns to be woven than the ordinary hand looms.

Norwich and its surrounding area has a treasure trove of museums with fine examples of Norwich's textile history as well as modern day art and craft galleries, antique shops, vintage clothes shops and stately homes to explore. ...

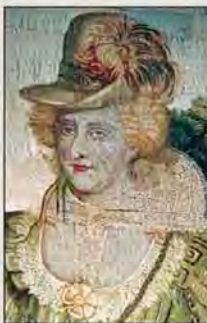
Houghton Hall This grand Palladian style house built between 1722-1735 was home to Sir Robert Walpole, Britain's first Prime Minister. Its sumptuous interior dates back to the original William Kent designs.

Textiles take centre stage and many of the rooms are named after the gems that line their walls or cover the beds. The Green Velvet Bedchamber is dominated by a four poster bed draped with the eponymous cloth, a colour associated with sleep and Venus. Four Brussels tapestries, telling the story of Venus and Adonis, were made to order and fit the room exactly.

The Embroidered Bedchamber has a bed covered in mid 18th century oriental needlework and Bruges tapestries line the walls. The Tapestry Dressing Room has an unusual Mortlake Tapestry

that depicts James I, Charles I, Christian IV of Denmark and the Stuart children.

Lining the walls of the glamorous White Drawing Room is fine brocaded silk woven by the Huguenots in Spitalfields, London given as a present by the Prince Regent – he also had some made for Buckingham Palace. Kingfisher blue and white hand-blocked and hand-painted Chinese wallpaper stretches over tea chests in the Cabinet Room and envelops the bed draped with intricate Chinese silk embroidered hangings. Equally striking is the stunning crimson wool and silk caffoy wall and furniture coverings in the Saloon. Take plenty of time here – the garden is wonderful too. **Near King's Lynn, Norfolk PE31 6UE**
T: +44(0) 1485 528 569 www.houghtonhall.com



PLACES TO EAT AND STAY • **Manor Coach House** The Fairstead, Cley next the Sea, Holt, Norfolk NR25 7RL
T: 07957 331388 www.manorcoachhouse-cley.co.uk •

Byfords 1-3 Shirehall Plain Holt, Norfolk NR25 6BG
T: +44(0) 1263 711 400 www.byfords.org.uk • **The Victoria Hotel**, Park Road, Wells-next-the-Sea, Norfolk NR23 1RG **T: +44(0) 1328 711 008 www.holkham.co.uk/victoria** • **The Crown Hotel**, The Buttlands, Wells-next-the-Sea, Norfolk NR23 1EX **T: +44(0) 1328 710 209 www.thecrownhotelwells.co.uk** • **The Hoste Arms** The Green, Burnham, Norfolk PE31 8HD **T: +44(0)**

1328 738 777 www.hostearms.co.uk • **Morston Hall**, Morston, Norfolk NR25 7AA **T: +44(0) 1263 741 041, www.morstonhall.com** • **Voewood**, Cromer Road, High Kelling, Norfolk NR25 6QS **T: +44(0) 1263 713 029**
Tours are available of this Arts and Crafts House. Interior fabrics are by Annabel Grey who sells at Verandah • **Wiveton Farm Shop and Cafe**, Holt, Norfolk NR25 7TE **T: +44(0) 1263 740 525 www.wivetonhall.co.uk** • **The Walpole Arms** (food only) The Common, Itteringham, Norwich, Norfolk NR11 7AR **T: +44(0) 1263 587 258 www.thewalpolearms.co.uk**



ings Lynn

Houghton Hall

Oxburgh Hall

Oxburgh Hall

Norfolk

Jenny Barrs © 2011

Wells Next to Sea

The Victoria Hotel

Blakeney Point

Gley-next-the-Sea

Cromer

Burnham Market

Hoste Arms

Fakenham

Holt

Voewood

Felbrigg Hall

Byfords

Verandah

Old Town

Shell Museum

Itteringham

ST. JUDES

North Walsham

Aylsham

Blickling Hall



Strangers Hall

Anglian Fashion Fabrics

Sainsbury Centre For Visual Arts

The Bridewell Museum

Norwich

The Bell Jar

Verandah